

## Installing the Jefferson County, Kansas GIS Parcel Map for iPhone or iPad

Requirements: Compatible with iPhone 3GS, iPhone 4, iPhone 4S, iPhone 5, iPod touch (3rd generation), iPod touch (4th generation), iPod touch (5th generation) and iPad. Requires iOS 4.3 or later. This app is optimized for iPhone 5.

1. Go to the your Apple iPhone App store and perform a search for "arcgis". The application titled ESRI ArcGIS should show up with a green icon beside it. Install the app in the same way you would install any other app by providing your Apple username and password.



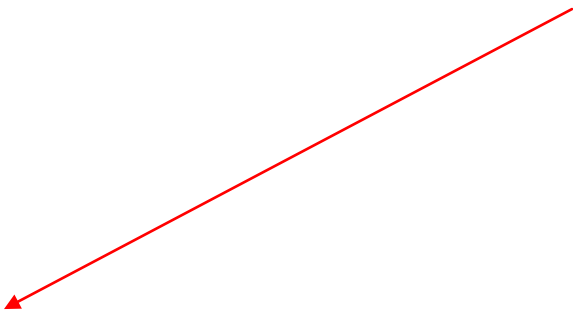
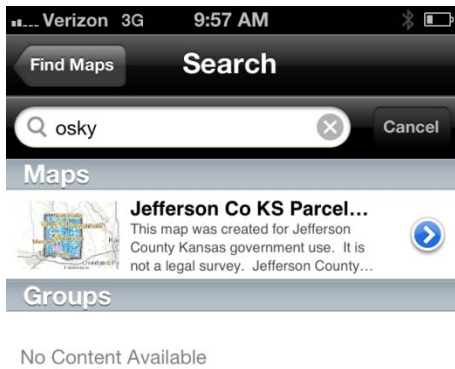
2. Once installation is finished, touch the green ArcGIS icon to open the application.



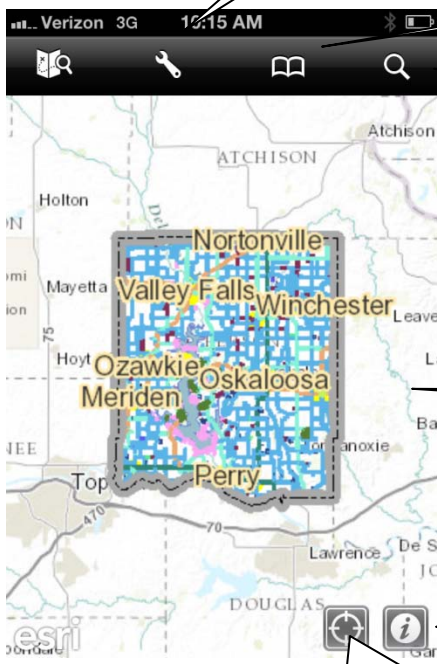
3. Next, touch the 'Gallery' and type in the word "osky" then touch Search.



4. You should now see the Jefferson Co KS Parcel Map. Touch the blue arrow and the map will open.



### Basic Tools



Measure distance and area.

Bookmark a location.

Touch the magnifying glass to search the world wide web for addresses and other locations.

Use two fingers to zoom in and out on the map.

Touch the 'i' to open the map Legend window.

Touch 'Bulls eye' icon to zoom to your current location.

## Find Information about a Parcel

1. Zoom to a the parcel you are interested in by using your fingers or using the magnifying glass to find an address. Then touch the map inside the parcel. A pop-up will appear.



2. Click the arrow to open the parcel information window.

3..Use your finger to scroll down through the information.



For questions regarding this application please call:

Jefferson County Kansas GIS Department  
Kirk Webb, GIS Specialist  
785-863-2173